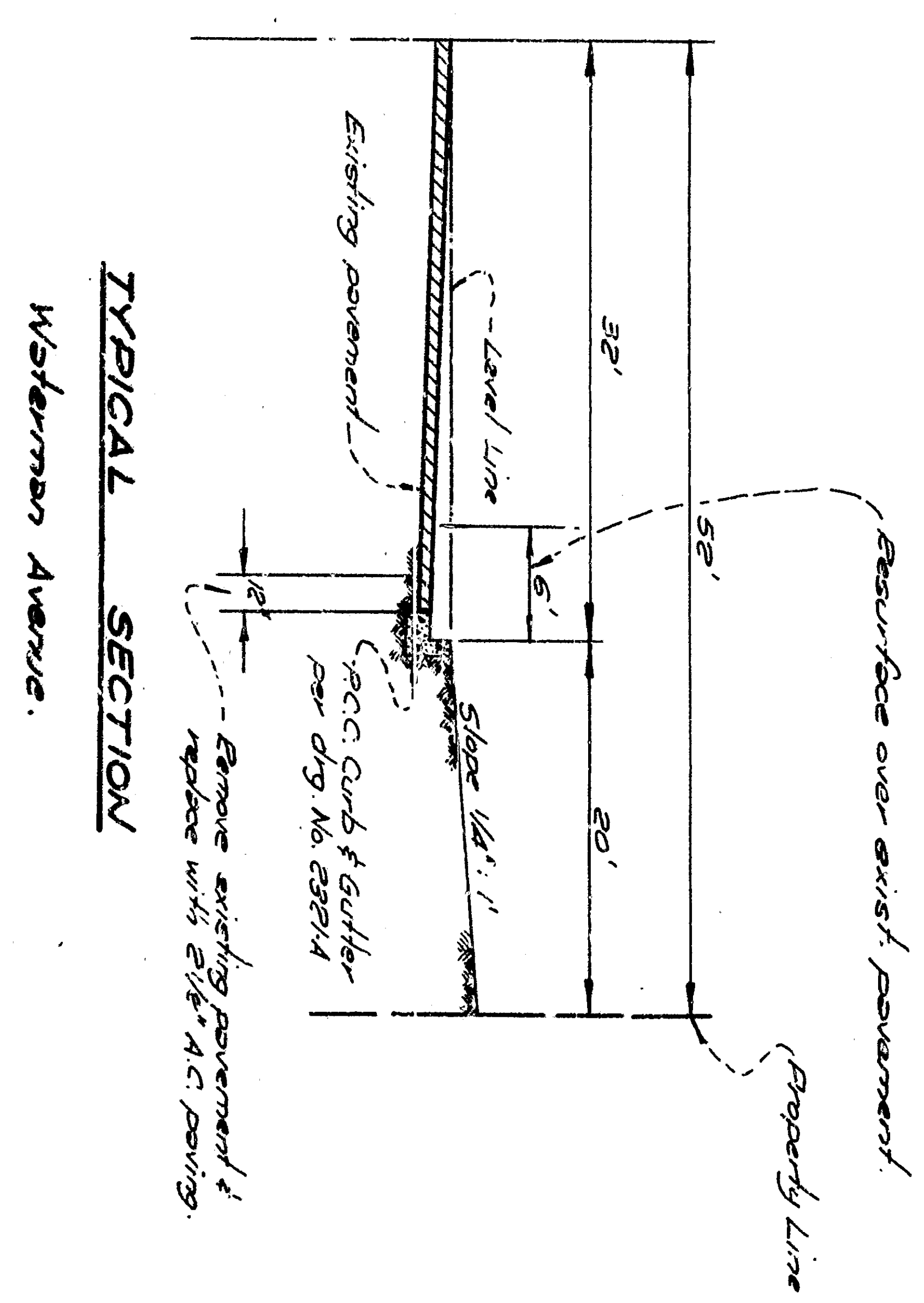
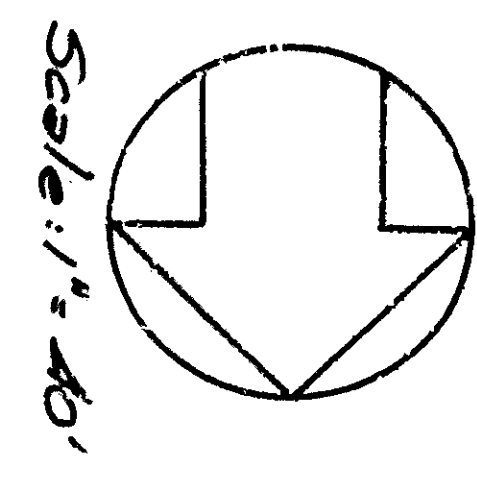
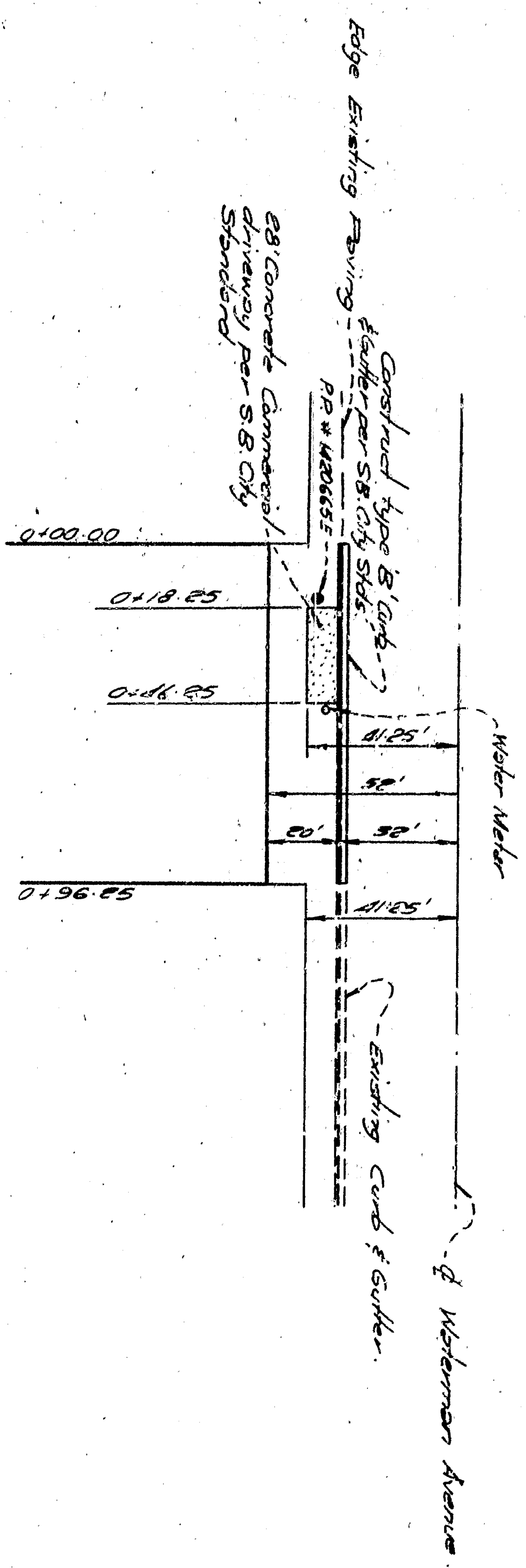
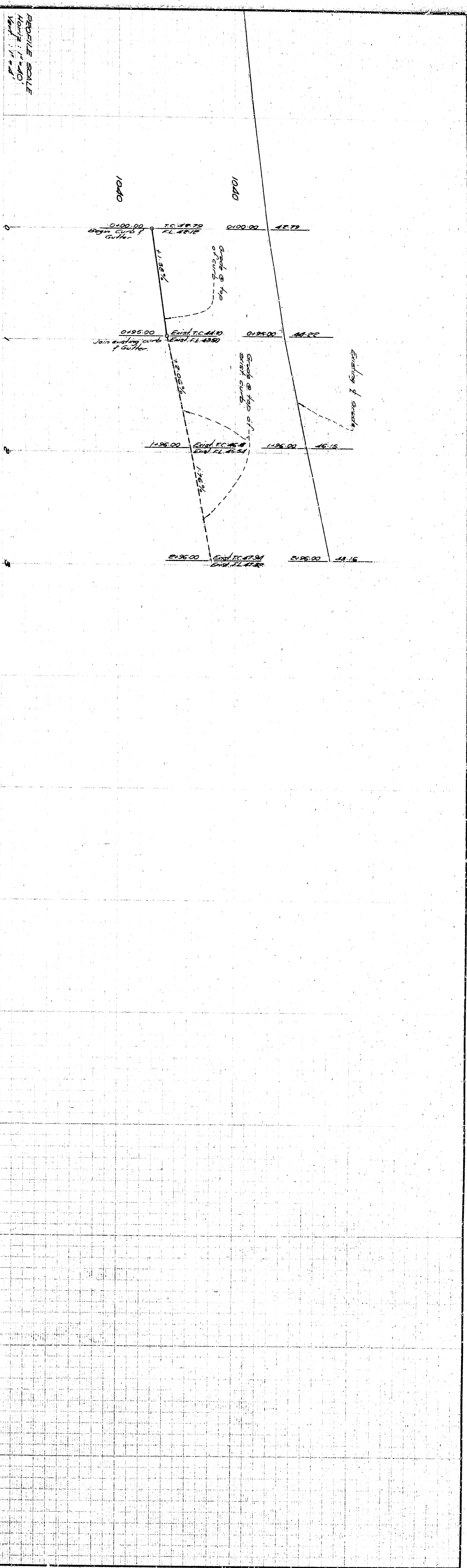


- GENERAL NOTES**
1. All work indicated on these plans shall be done in accordance with the specifications of the Standard Specifications for Highway Construction, No. 800.
  2. All standard cross sections of curb & gutter of pavement are as per City of San Bernardino Department of Engineering S.D.C.P. 14.0201.
  3. BENCH MARK: U.S.C. & G.S. 4584, 1985, 5' 1" above top of top of 141' center of pavement (elevation 54.00) of Waterman Avenue, Station: 1+95.00.
  4. Subsequent applicable concrete paving shall be placed over the existing pavement to provide a smooth, even street surface as directed by the City Engineer.

SUBMITTED BY: CAMPBELL MILLER & ASSOCIATES CIVIL ENGINEERING, PLANNING & SURVEYING		APPROVED: 3-1-80 1980		CITY OF SAN BERNARDINO DEPARTMENT OF ENGINEERING	
DRAWN BY: 3054 DON B. MILLER		CHECKED BY: R.C.H.		IMPROVEMENT PLANS WATERMAN AVENUE 241.95' NORTH OF 5TH STREET	
DON B. MILLER P.C.E. No. 1730		RECOMMENDED BY: T.S.			



TYPICAL SECTION  
Waterman Avenue.

- GENERAL NOTES**
1. All work indicated on these plans shall be done in accordance with the specifications of the City of San Bernardino, No. 887.
  2. All standard cross sections of curb, gutter & pavement are as per City of San Bernardino Department of Engineering S.D. 16.0204, 1985-87.
  3. BENCH MARK: U.S.C. & G.S. 4584, 1985-87. It is assumed to be the center of pavement formation 5th Street, Waterman Avenue, Station: 1985-04.
  4. Subsequent applicable concrete paving shall be placed over the existing pavement to provide a proper ground cover section as directed by the City Engineer.

SUBMITTED BY: CAMPBELL MILLER & ASSOCIATES CIVIL ENGINEERING, PLANNING & SURVEYING		APPROVED: 3-1-83 1983	
DRAWN BY: 3094 DON B. MILLER		CHECKED BY: R.C.H.	
DESIGNED BY: R.C.H.		RECOMMENDED BY: T.S.	
CITY OF SAN BERNARDINO DEPARTMENT OF ENGINEERING IMPROVEMENT PLANS WATERMAN AVENUE 241.05' NORTH OF 5TH STREET			